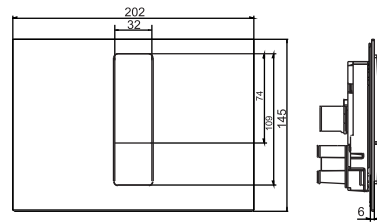
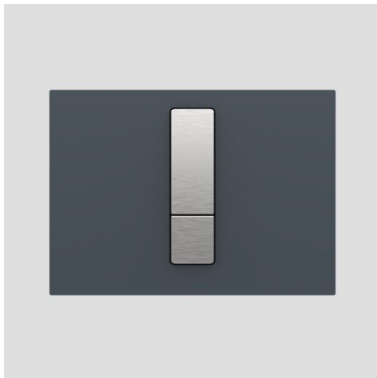


16.752.41..0000

SANIT Push plate Ineo Bright glass anthrazit



Item number

16.752.41..0000

Ean11

4013341644877

Product description

Push plate INEO BRIGHT l/w/h: 202/145/10 mm, for concealed cisterns with small access opening, dual flush, consisting of actuator element in brushed stainless steel look, cover plate and fixing bolts, packed in a box

material/colour: glass/ anthracite suitable for the following SANIT concealed cisterns:

CC-122-S-UO-2V-2C CC-121-S-FO-2V-2C CC-120-S-FO-2V-2C - from series-production status 20
 CC-150-S-UO-2V-2C - from series-production status 20
 CC-150-S-FO-2V-2C - from series-production status 20
 CC-200-S-FO-2V-2C - from series-production status 20
 CC-80-S-FO-2V-2C