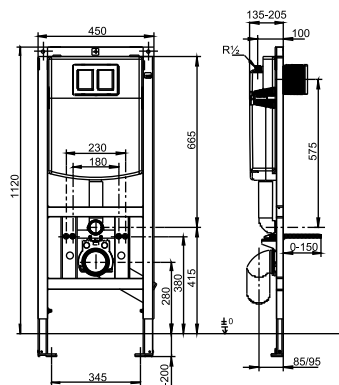


90.726.00..T000

## SANIT WC element INEO PLUS disabled 1120/450



### Item number

90.726.00..T000

### Product description

WC element INEO PLUS, handicapped accessible equipped with INEO FRESH box for water box cube, with small access opening, front-operated, h/w/d: 1120/450/130 mm, WC mounted 50 mm higher than the standard height, for wall-hung WCs with an overhang > 60 cm, self-supporting powder-coated steel frame, for covering with plasterboard, installation onto a solid wall, in drywall constructions etc., 4-point-fastening, fully pre-assembled, includes self-locking feet with swivel base plates and fastening set, adjustment range of feet from unfinished floor level to upper edge of finished floor level: 0-200 mm, adjustment range front to wall: 135-205 mm (when mounted on wall brackets Code No. 17.257.00..T000), with back-to-back installation distance between front edges 270-290 mm, with SANIT double bend, SANIT concealed cistern with insulation against condensation (CC-121-S-FO-2V-2C), with dual flush (7.5-4.5 l / 4-2 l) and flexible cable technology, factory setting 6 and 3 litres, with protection cap for the flush pipe, SANIT fill valve Noise Class I, 2-part angle valve connection set R 1/2, 4-position adjustable mounting clip, WC connection bend 90deg DN 90(d:90) with reducing sleeve DN 90 (d:90)/DN 100 (d:110) with protection cap, SANIT complete WC connection set DN 90(d:90)/180 mm, protection box for access opening can be cut to size, flexible hose to fill valve, can be screwed by hand, 2 M12 WC retaining bolts adjustable to 180/230 mm with protection plugs and nuts, installation instructions, without push plate, packed in a box

Concealed cistern tested to DIN EN 14055, Noise Class I

The cleaning cubes being used must be suitable for WC plastic cisterns and must not contain chlorine or any oxidizing components, otherwise the cistern may be damaged (e.g. stress cracking).

#### Accessories:

- wall brackets (pair) Code No. 17.257.00..T000
- possible connections (extended wall brackets, feet, bottom wall bracket)
- WC flush actuators
- sound-absorbing sets
- WC connectors (double bend, offset connection bend, etc.)
- cladding panel Code No. 17.115.00..S000
- roughing-in set for shower WC Code No. 03.956.00..0000
- adjustable flush reducer Code No. 05.261.00..0000