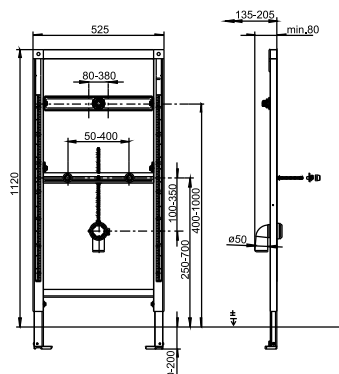


90.675.00..T000

SANIT Urinal element INEO exposed valve 1120/525



Item number	Product description
90.675.00..T000	<p>Urinal element INEO for exposed flush valves or for ceramic urinals with integrated controls h/w/d: 1,120/525/80 mm, self-supporting, powder-coated steel frame, for covering with plasterboard, installation onto a solid wall, in drywall constructions etc., 4-point fastening, fully pre-assembled, includes self-locking feet with swivel base plates and fastening set, suits all ceramic urinals, adjustment range of feet from unfinished floor level to upper edge of finished floor level: 0-200 mm, adjustment range front to wall: 135-205 mm (when mounted on wall brackets code no. 17.257.00.. T000), with 1 sound-insulated wall bushing, G 1/2 internal thread/G 1/2 male thread, with 2 M8 bolts for fastening urinal including protection plugs and chromium-plated protection caps, with waste bend DN 50 (d:50) and sound-absorbing clamp, with threaded bar M8 x 300 mm, all traverses pre-assembled, without exposed flush valve, packed in a box Accessories:</p> <ul style="list-style-type: none"> - wall brackets (pair) code no. 17.257.00..T000 - sound-absorbing sets - extension sets