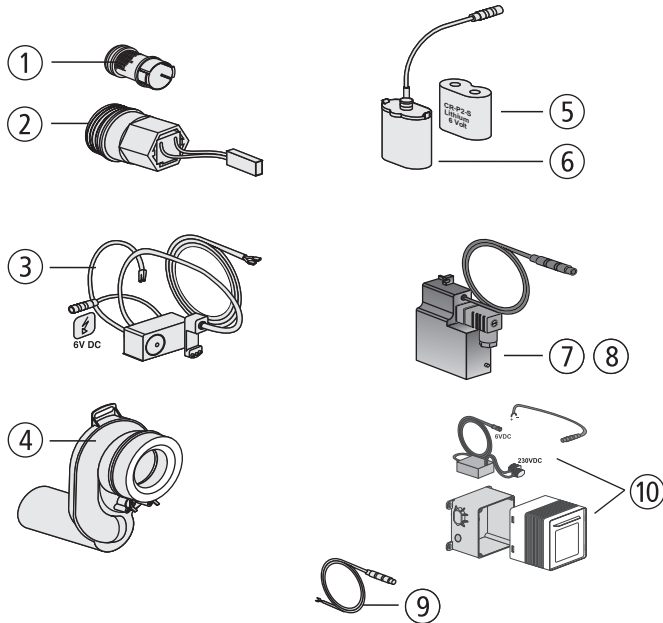


Urinal with cartridge valve technology, vandal-safe RL1 (APIS 6 SM) (from 04/2008)



| No. | Name | Code No. | Recommended price/€ |
|-----|---|-----------------|---------------------|
| 1 | Filter | 03.343.00..0000 | |
| 2 | Solenoid cartridge valve 6V DC | 03.342.00..0000 | |
| 3 | Urinal clip RL 1 for cartridge valve technology | 03.371.00..0000 | |
| 4 | Urinal exhaust trap with pre-assembled stainless steel electrodes | 03.114.00..0000 | |
| 5 | Lithium battery 6V DC, CR P 2 | 02.993.00..0000 | |
| 6 | Battery holder for battery CR P 2 | 03.109.00..0000 | |
| 7 | Power supply 24V AC/6V DC | 03.113.00..0000 | |
| 8 | Power supply 230V AC/6V DC, for single installation | 03.112.00..0000 | |
| 9 | Connection cable 600 mm with special plug | 03.111.00..0000 | |
| 10 | Concealed power supply unit 230V AC/6V DC, for single and series installations | 01.254.00..0000 | |
| | | | |